



SPECIALIZING IN FARM/RANCH PROPERTIES, EQUINE & RURAL RESIDENTIAL PROPERTIES,
REAL ESTATE AUCTIONS AND FARM/RANCH MANAGEMENT. WYOMING AND NEBRASKA.

Madden Brothers Frontier Realty

4576 US Highway 26-85 ~ PO Box 670
Torrington, Wyoming 82240 ~ 307-532-7079
www.maddenbrothers.com



Shawn Madden - 307-532-1575
Doug Chamberlain - 307-532-1559
Kurt Campbell - 307-532-0590 
Tom Hirsig - 307-630-0357 



Big Valley Ranch 5,285 +/- acre ranch NE of Torrington, Wyoming. Entire ranch is located in Wyoming. One section is Wyoming state lease. Excellent water and outstanding fencing. Interior fencing provides opportunity for rotation. New corral, 6 windmills, 1 submersible pump w/pipeline serving 6 tanks, 1 submersible pump serving 1 tank. One of the best ranch units in the region. Contact our office for further information. Offered for \$1,950,000.



Clements Ranchette New Listing

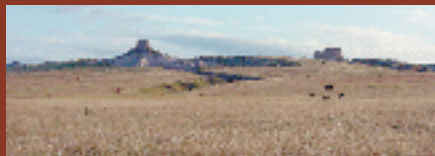
44 Acres +/- located North of Lusk, WY. Home and outbuildings. Native pasture. 1560 sq ft Home. 3 bed, 2 baths. Detached garage. Highly motivated Seller. Priced to Sell at \$205,000.



Buttermilk Road Improvements & Acreage 10 +/- acres includes Quonset, Commodity Building, Grain Bin, Silage Pit, Stock/Domestic and Water Well. Livestock water tanks and partial perimeter fence compliment the property. The property is only minutes from Torrington, Wyoming located near Buttermilk road with several locations for your Home, corrals, & more buildings. \$125,000.



Storage Units Present business use offers 125 individual storage rooms rented on monthly basis. Secure indoor storage facility located near high traffic streets in Torrington, WY. High visibility and access with large parking areas compliment the facility. Broker Co-Owned. Being offered for \$285,000.



Ward Cattle Company, LLC. This ranch consists of 1037 +/- total acres that include 249 irrigated acres (2 pivots). The ranch offers good farming production with some of the best grass gains in the region. The ranch has convenient access to Torrington and Cheyenne via Highway 85. This property is unique and has been priced according to current market conditions. Wildlife also abounds on this property for hunting snow and Canadian geese, ring neck pheasants and white tail deer. \$700,000.



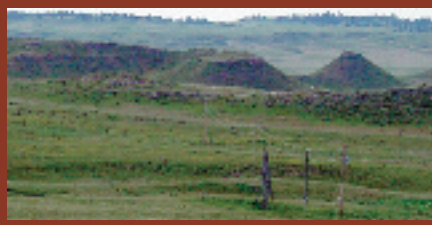
Southern Hills Estates This is your chance to live the country life! 15 lots available for sale off the Huntley Highway. - Acreages range from 6.08 acres to 11.55 acres. - Ranging in prices from \$18,500 to \$29,500. - Electricity will be installed to property line with land-line telephone as an option. - Central Postal Boxes will be available for rural mail. Broker owned.



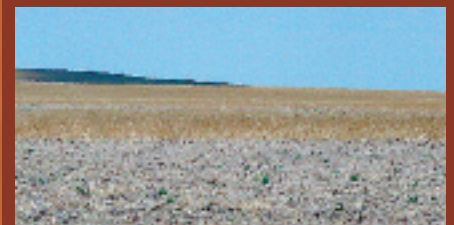
Ward Agri-Business, LLC - Hillsdale, WY 902 acres of excellent center pivot irrigated land, 7 center pivot irrigation systems and 6 wells. 160 acres development land, 2 Quonset hut shop buildings, 2 grain storage tanks with air fans, 1 livestock handling facility, 2,400 sq. ft. two story home with basement. \$3,400,000



Grote Farm Sioux County, Nebraska farm. 75 +/- acres with a 3 Bedroom Home w/Mature Trees, outbuildings and corrals. 55 +/- Farmable Acres 52 +/- Acres under Valley 7 Power Pivot Shallow Irrigation well & Pathfinder Irrigation District Surface Water Offered for \$130,000 or \$115,000 without Improvements.



Costopoulos Grassland North of Historic Fort Laramie in the rolling hills of WY. Large native grass parcels offer privacy and frequent visits from wildlife. County roads both paved and graveled, border the properties. Water wells and rural electric are present. Each grass parcel consists of 320 acres +/- and is being offered for \$250,000 each.



Dryland Wheat Farm Excellent crop production. Located NW of Yoder, WY. \$129,500.

RANCH & RECREATIONAL PROPERTIES